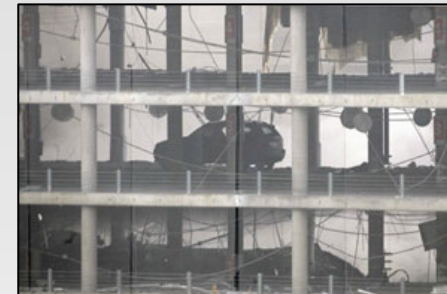


EXPLOSIVES

Research into the conditions for designing and constructing car parks at transport terminals subject to the risk of terrorist attacks.

Objective: To design and introduce practical tools for the design (including choice of materials and protection systems) and recommendations for the construction and operation of car parks at transport centres where explosive devices might be planted in terrorist action, with the goal of laying the foundations for future regulations.



- Identify the risks.
- Establish solutions.
- Lay the foundations for calculating designs.
- Find experimental methods of testing to verify structures.